

CW  ALUMİNYUM

Renewable Energy Technologies
2025



CW Aluminum Mission

As CW Aluminum, we manufacture frames, mounting accessories, and infrastructure materials for renewable energy technologies. With our mounting systems developed using advanced technology and engineering, we provide the industry with reliable and long-lasting solutions. By developing functional and innovative products tailored to customer needs, we ensure the highest levels of quality and efficiency.

In EPC projects, by integrating our solar panels and construction solutions, we enhance customer satisfaction while ensuring more efficient and sustainable results in the sales processes. By increasing our domestic production capacity, we contribute to economic growth and support sustainable energy infrastructure, adding value to the future.



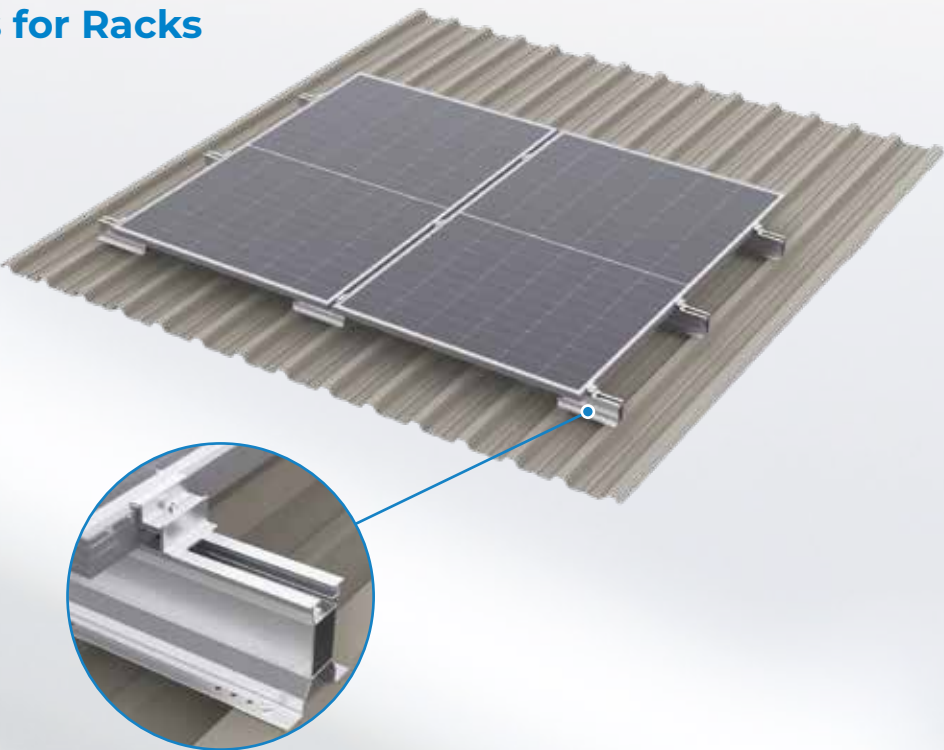
CW Aluminum Vision

By producing high-tech frames, mounting accessories, and infrastructure materials for renewable energy technologies, our customer-focused approach, continuously growing production capacity, and engineering strength aim to establish a strong position in renewable energy solutions on a global scale.

Sloped Roof Construction Systems

1.1 Top-Mounted Systems for Racks

This construction system, developed for trapezoidal and sandwich roofs, offers height options of 60 mm and 80 mm and is mounted on the roof rack from the top. Sharp-ended screws or suitable rivets can be used for the installation of stainless steel. The wide bottom opening allows for easy assembly, while the top opening supports both horizontal and vertical installation. Hole sizes for parts can be pre-drilled during production, preventing burr formation. Roof sealing is ensured with the EPDM strip. A lightweight and durable system has been designed, considering static calculations to ensure suitability for wind, snow, and earthquake loads.



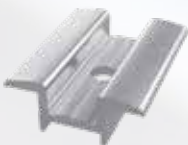
Technical Data Details

Height:	H: 60 mm H: 80 mm
Length:	Part Profile or Full Length Profile
Applications:	Trapezoidal and 2-3-4-5 Ribbed Sandwich Roofs
Mounting Method:	Yatay ve Dikey Montaja Uygun
Roof Mounting Method:	Sharp-Ended Screw or Rivet (Pop/Butterfly/Sealed Gasket Rivet)
Construction Material Details:	6060 - 6063 - 6005 Aluminum

Related System Components



Rafter Profile
(Storm Model)



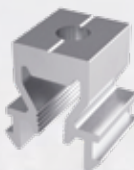
Mid Clamp
(Storm/Diamond Model)



End Clamp
(Storm/Diamond Model)



Sharp-Ended
Screw



Aluminum Clawed Nut
(Storm Model)



Rivet



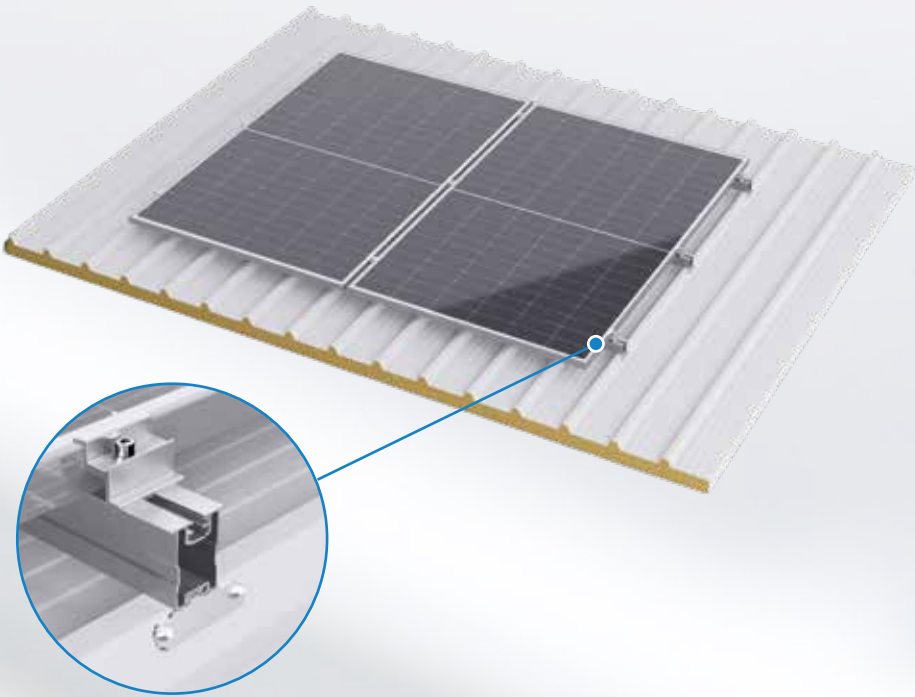
Hex Socket Bolt
(M8)



EPDM Tape

1.2 Side and Bracket Mounted Systems for Ribbed Roofs

Construction System Developed for Trapezoidal and Sandwich Roofs – A versatile system offering 60mm and 80mm height options, suitable for quick installation on ribbed roofs, with pre-drilled holes to prevent burrs and EPDM tape for waterproofing. Designed to handle wind, snow, and seismic loads with lightweight and durable construction.



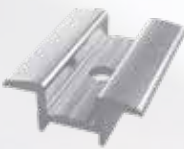
Technical Data Details

Height:	H: 60 mm H: 80 mm
Length:	Part Profile or Full Length Profile
Applications:	Trapezoidal and 2-3-4-5 Ribbed Sandwich Roofs
Mounting Method:	Side Mounting on the Roof Rib
Roof Mounting Method:	Self-Tapping Screw
Construction Material Details:	6060 - 6063 - 6005 Aluminum

Related System Components



Rafter Profile
(Diamond Model)



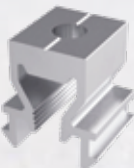
Mid Clamp
(Diamond Model)



End Clamp
(Diamond Model)



Sharp-Ended
Screw



Aluminum Clawed Nut
(Storm Model)



Stainless
Steel Bracket

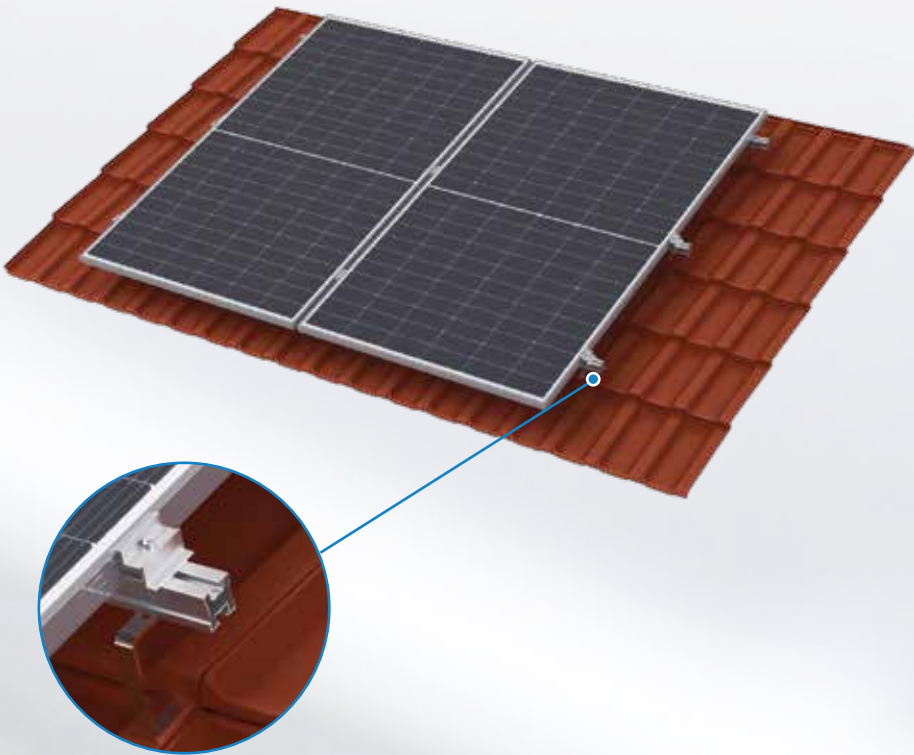


Hex Socket Bolt
(M8)



EPDM Tape

Kiremit çatılar için geliştirilen bu konstrüksiyon sistemi, çatı aşıklarına veya kirişlerine sabitlenerek tam boy uygulanır. Montajda aşık malzemesine uygun vidalar kullanılır ve sistem dikey ile yatay montaja uygundur. Çatı kancası monte edildikten sonra kiremitin tekrar kapatılması kolaydır, bu sayede ekstra izolasyona gerek kalmaz. Statik hesaplarla rüzgar, kar ve deprem yüklerine uygun, hafif ve dayanıklı bir yapı oluşturulmuştur. Çatı kancasındaki yükseklik ayarı sayesinde, piyasadaki çoğu kiremit çatı ile uyum sağlar.



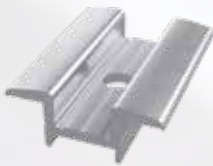
Technical Data Details

Height:	H: 40 mm
Length:	Full-Length Profile
Applications:	Tile Roof
Mounting Method:	Roof Purlins
Roof Mounting Method:	Connection Element for Roof Purlins (Wood, Concrete, Steel)
Construction Material Details:	6060 - 6063 - 6005 Aluminum

Related System Components



Rafter Profile
(Storm Model)



Mid Clamp
(Storm Model)



End Clamp
(Storm Model)



T-Head
Bolt



Roof
Hook



Wood
Screw



Hex Socket Bolt
(M8)

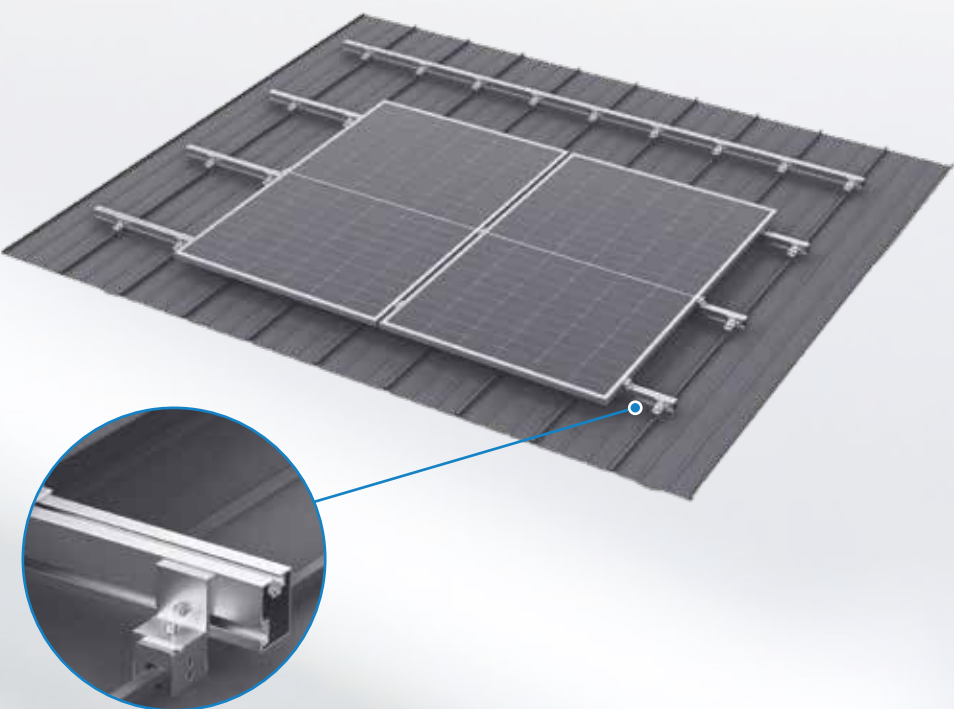


Hexagon
Nut



Square
Nut

This construction system is mounted using a compression method, with screws included in the connection equipment. It is suitable for both vertical and horizontal mounting. Thanks to the compression method, no drilling is required on the roof, which prevents damage to the insulation. A lightweight and durable structure has been designed, capable of withstanding wind, snow, and seismic loads, based on static calculations. The system utilizes a standing seam attachment, L-brackets, and full-length profiles during installation.



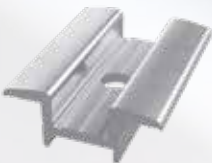
Technical Data Details

Height:	H: 60 mm
Length:	Full-Length Profile
Applications:	Standing Seam Roof
Mounting Method:	Vertical
Roof Mounting Method:	Compression to the Rib
Construction Material Details:	6060 - 6063 - 6005 Aluminum

Related System Components



Rafter Profile
(Storm Model)



Mid Clamp
(Storm Model)



End Clamp
(Storm Model)



T-Head
Bolt



Roof Standing
Seam Profile



"L"
Bracket



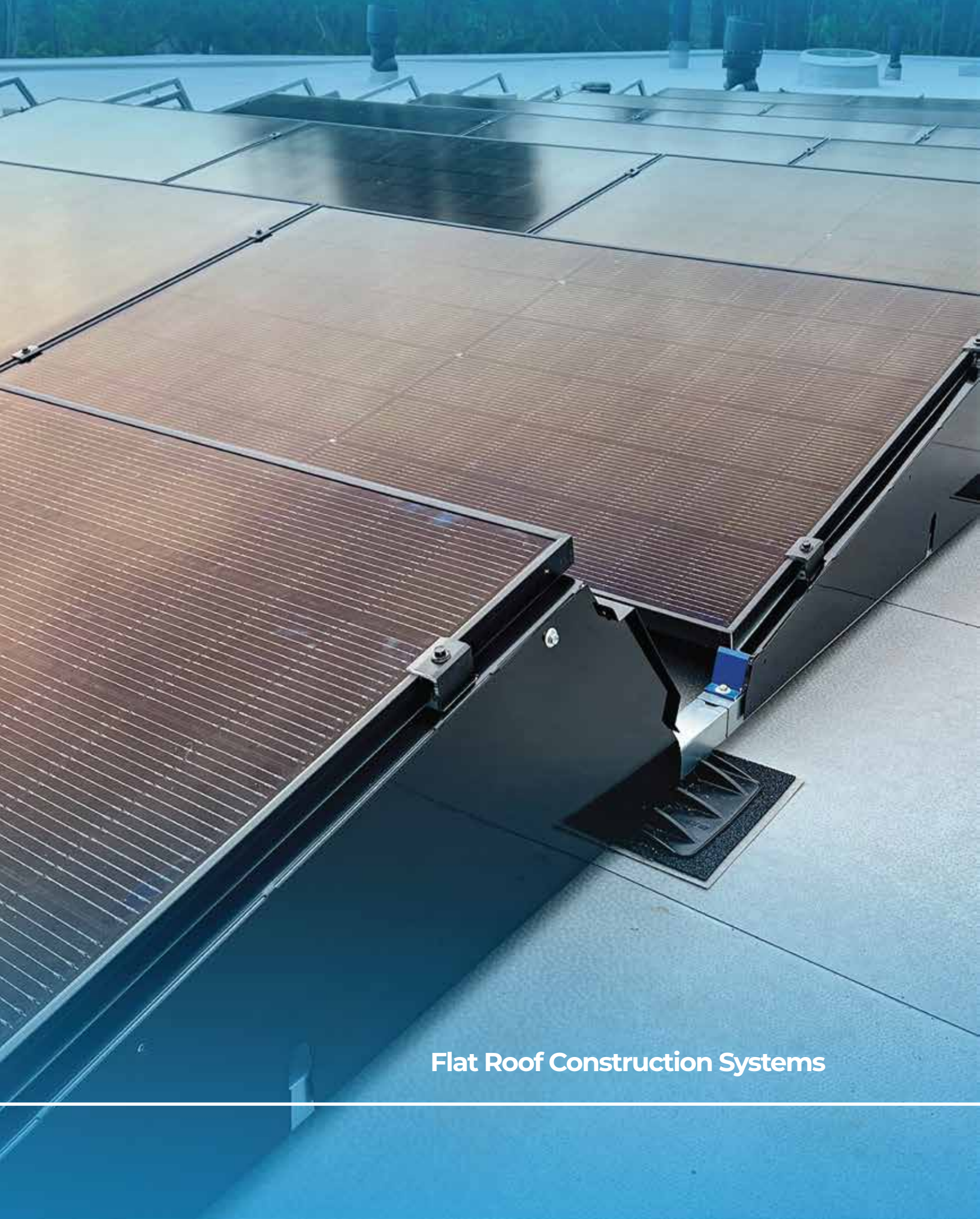
Hex Socket Bolt
(M8)



Hexagon
Nut



Rectangular Nut
CW-02-0053



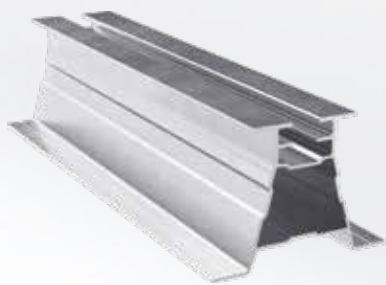
Flat Roof Construction Systems

Flat Roof Constructions are supporting systems designed to securely and efficiently mount solar panels either horizontally or at an inclined angle. These constructions are typically made from aluminum, galvanized steel, or stainless steel to enhance durability and offer long-lasting performance. In flat roof systems, the optimal placement of panels at the correct angle is crucial to capture the maximum amount of sunlight. Therefore, fixed or adjustable angle constructions can be preferred.

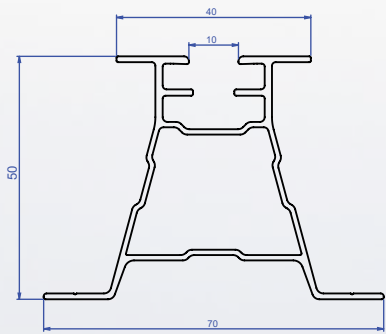
These structures offer high resistance to wind and snow loads, ensuring that solar panels are securely fixed in place. Additionally, ballast systems that do not require drilling allow for installation without damaging the roof. The modular design of flat roof solar constructions provides easy installation and maintenance. These systems are widely used in commercial, industrial, and large-scale energy projects. They are an ideal solution for both achieving energy efficiency and supporting the transition to sustainable energy.



Diamond Series



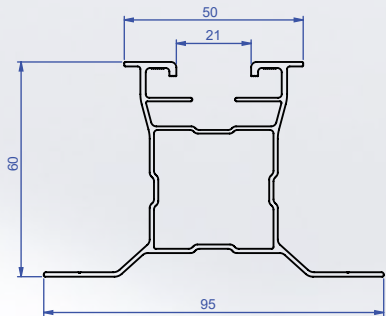
50 MM
Rafter Profile
CW-02-0050



Diamond Series



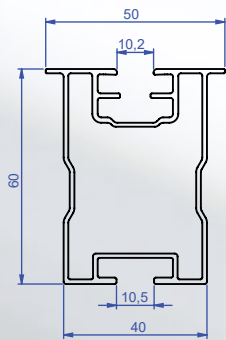
60 MM
Rafter Profile
CW-02-0046



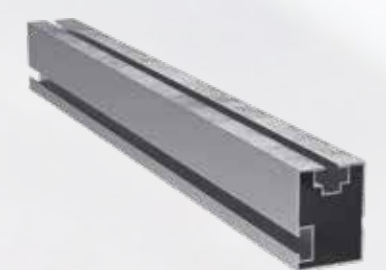
Diamond Series



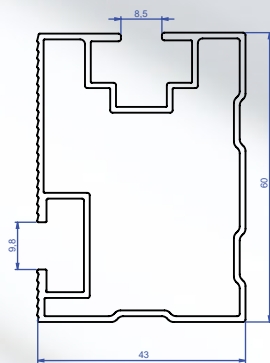
60 MM
Rafter Profile
CW-02-0055



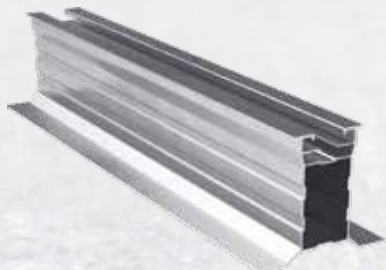
Diamond Series



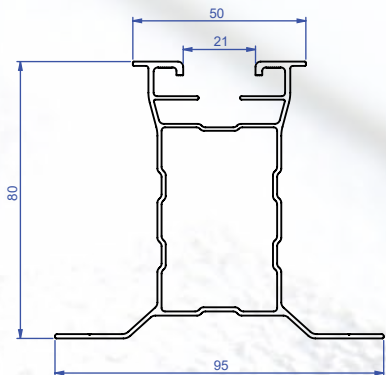
60 MM
Rafter Profile
CW-02-00017



Diamond Series



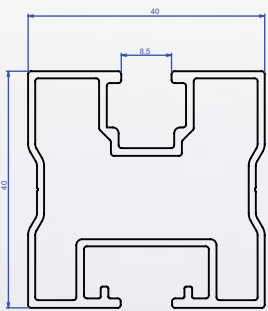
80 MM
Rafter Profile
CW-02-0045



Diamond Series



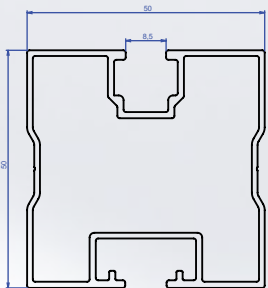
40 MM
Rafter Profile
CW-02-0062



Diamond Series



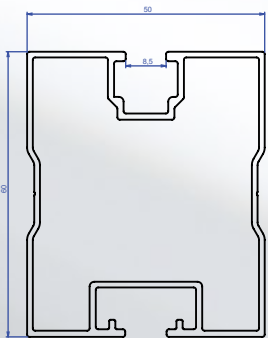
50 MM
Rafter Profile
CW-02-0065



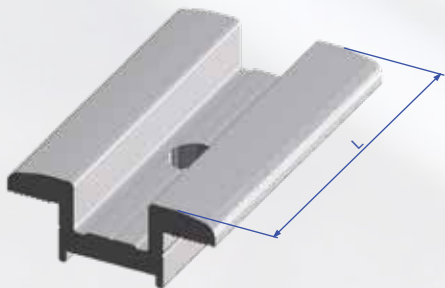
Diamond Series



60 MM
Rafter Profile
CW-02-0066

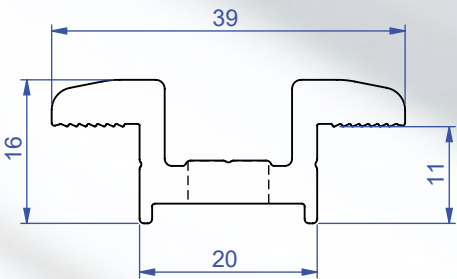


Storm Series

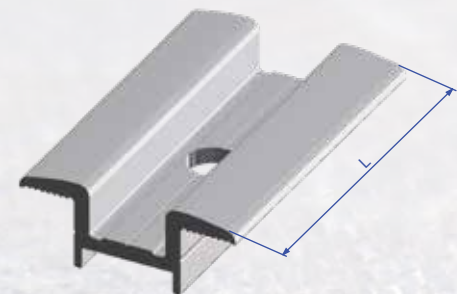


L= 50 mm, 60 mm, 80 mm

MID KLEMP
60 MM
CW-02-0001

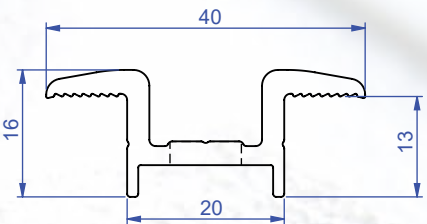


Diamond Series

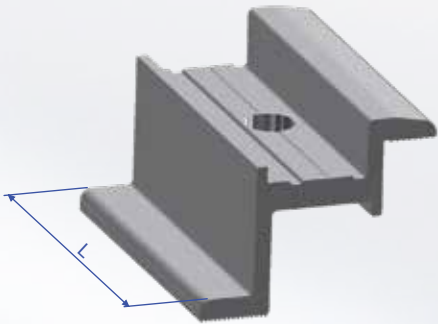


L= 50 mm, 60 mm, 80 mm

MID KLEMP
60 MM
CW-02-0041

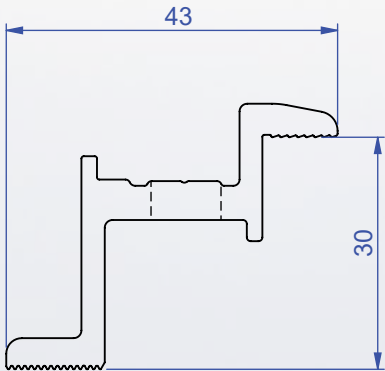


Storm Series

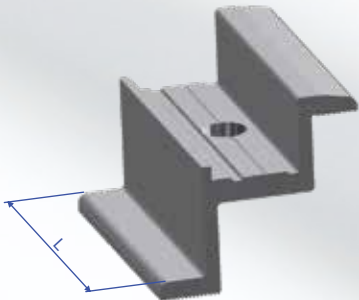


L= 50 mm, 60 mm, 80 mm

30'LUK
END CLAMP
60 MM
CW-02-0009

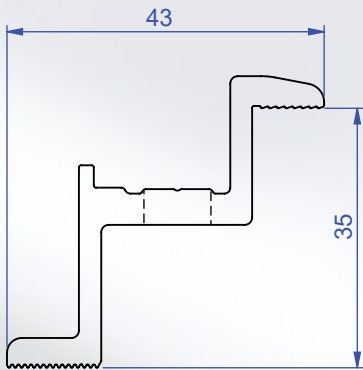


Storm Series

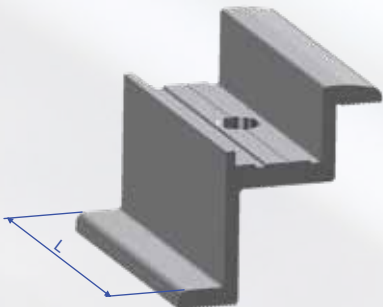


L= 50 mm, 60 mm, 80 mm

35'LİK
END CLAMP
60 MM
CW-02-0004

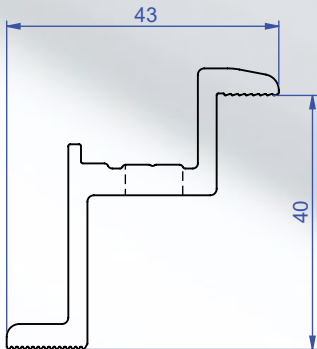


Storm Series

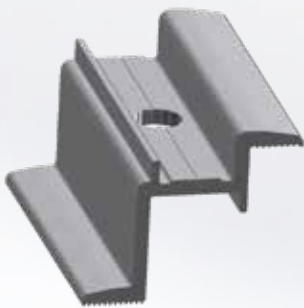


L= 50 mm, 60 mm, 80 mm

40'LİK
END CLAMP
60 MM
CW-02-0003

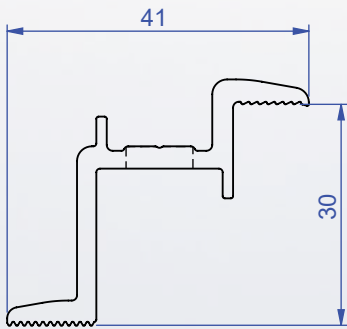


Diamond Series

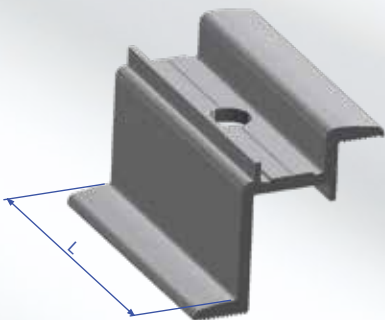


30'LUK
END CLAMP
60 MM
CW-02-0042

L= 50 mm, 60 mm, 80 mm

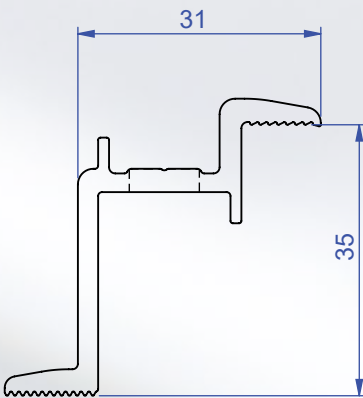


Diamond Series



35'LIK
END CLAMP
60 MM
CW-02-0043

L= 50 mm, 60 mm, 80 mm

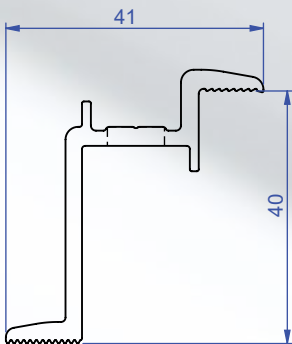


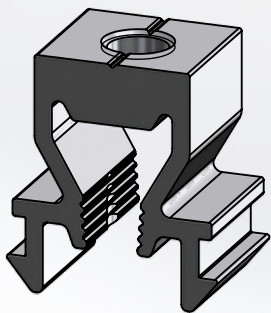
Diamond Series



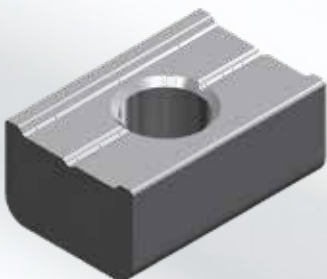
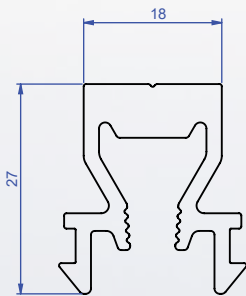
40'LIK
END CLAMP
60 MM
CW-02-0044

L= 50 mm, 60 mm, 80 mm

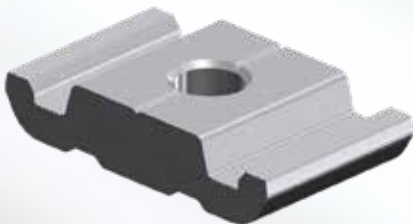
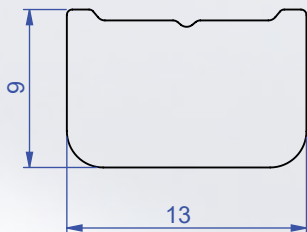




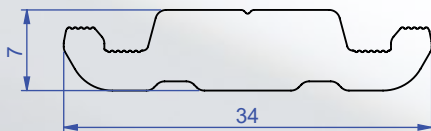
Special Nut
20 MM
CW-02-0052



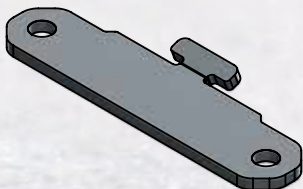
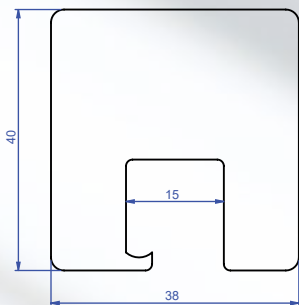
Rectangular
Flat Nut
20 MM
CW-02-0054



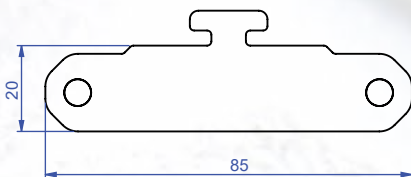
Special Nut
20 MM
CW-02-0053



40 MM
Roof Standing Seam Profile
CW-02-00013



Stainless Steel Bracket
CW-02-0056



Roof-mounted Solar Power Plant



KAYSERİ

Ground-mounted Solar Power Plant



ŞIRNAK

NOTES:

NOTES:

CW  ALÜMiNYUM

Renewable Energy Technologies